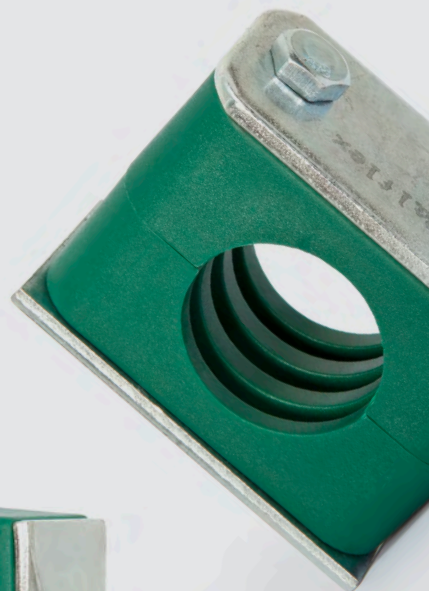


Balflex[®]

Hydraulic Pipe Clamps



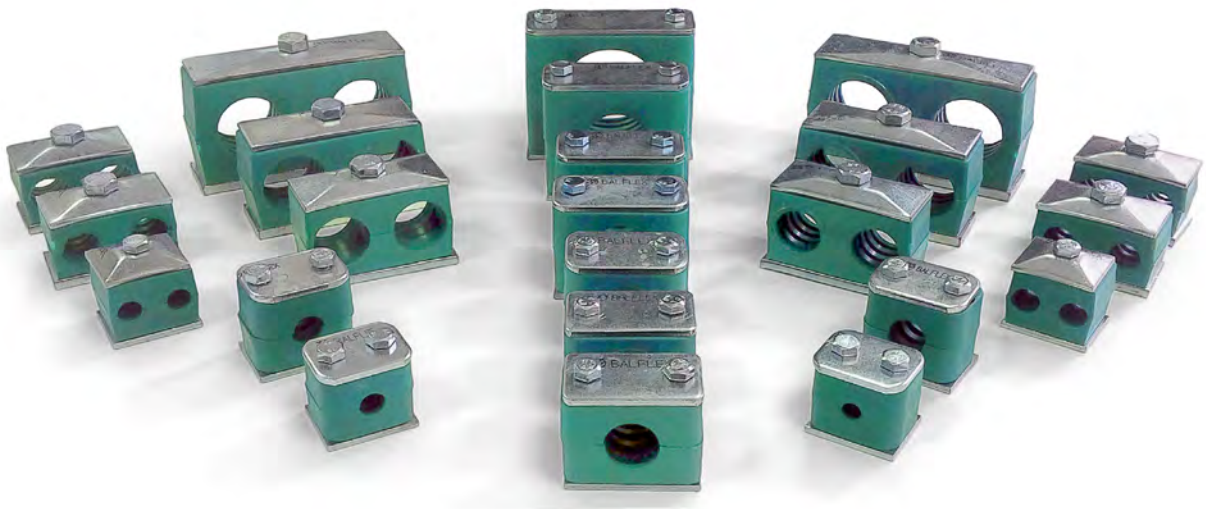
GESFLUID





Hydraulic Pipe Clamps

Balflex® hydraulic pipe clamps are designed for use with Balflex® hydraulic pipes in high-pressure hydraulic systems.



The range of **Balflex®** clamps is produced according to **Balflex®** specifications and DIN 3015 standard. **Balflex®** has optimized the construction of these hydraulic pipe clamps in order to assure top rated performance, wide range of application, reliability and economy. Among their features are:

Heat resistance: **Balflex®** hydraulic pipe clamps are available in three materials:

- Polypropylene - for temperatures up to 90°C
- Polyamide 6 - for temperatures up to 180°C
- Aluminum - for temperatures up to 380°C.

Wide range: **Balflex®** hydraulic pipe clamps are available in three series:

- L - for light-duty (standard wall) hydraulic pipes
- S - for heavy-duty (thick wall) hydraulic pipes
- T - for twin lines of hydraulic pipes

Versatility & easy handling: **Balflex®** hydraulic pipe clamps can be mounted on rails, welded or directly screwed on the walls. They are available in 8 different kinds of sets, ready to install with all accessories.

Security: **Balflex®** polypropylene hydraulic pipe clamps can be supplied on request also with photoluminescence pigments (radiation and toxicity free) in the yellow/green spectrum that allow the localization of the pipes in complete darkness for many hours after light failure.

Balflex assumes no liability for typographical errors or other errors.

For any precise technical information you must always contact our technical department. Dimensions and Data shown may be changed without notice.

The Balflex® industrial couplings part code is composed of three groups of digits:

84 . XXX Y . XXXX Y

A
B
C
D
E

A series

B design type: 100 - light duty; 200 - heavy duty; 300 - twin line

C set A through H

D pipe external diameter

E body material: P - polypropylene; N - polyamide 6; A - aluminum

Materials

Balflex® hydraulic pipe clamps are available in three materials - polypropylene, polyamide 6 and aluminum compound with 12% silicum. Materials

characteristics are given in table 1. Normally, the material choice is made according to the rated working temperature of the pipes.

Table 1: Physical characteristics of Balflex Pipe Clamps Materials

	Polypropylene	Polyamide	Aluminum
Density	0,906 g/cm ³	1,13 g/cm ³	2,66 g/cm ³
Flexure resistance (acc to DIN 53452 test method)	0,906 g/cm ³	130 N/mm ²	70 N/mm ²
Impact resistance (acc to DIN 53453 test method)	no break	60 kJ/cm ²	na
Compression strength (acc to DIN 53454 test method)	90 N/mm ²	120 N/mm ²	500 N/mm ²
Elasticity module (acc to DIN 53452 test method)	200 N/mm	4500 N/mm	70000 N/mm
Fatigue resistance (acc to DIN 53454 test method)	27 N/mm ²	170 N/mm ²	180 N/mm ²
max working temperature	90°C	180°C	380°C
expansion coefficient	0,22 W/m*K	0,30 W/m*K	12,6 W/m*K
Thermal conductivity	15 x 10 ⁵ / *K	15 x 10 ⁵ / *K	21 x 10 ⁶ / *K
Electrical resistance	10 ¹⁸ Ohm cm	10 ¹⁵ Ohm cm	na

Balflex assumes no liability for typographical errors or other errors.
For any precise technical information you must always contact our technical department. Dimensions and Data shown may be changed without notice.



Series

Balflex® hydraulic pipe clamps are available in three series:

- **Light Duty** series for standard wall hydraulic pipe and working pressures up to 200 bar (2900 PSI) (from 6 mm to 50,8 mm external hydraulic pipes and from 1/8" to 1-1/2" nominal internal diameter pipes)

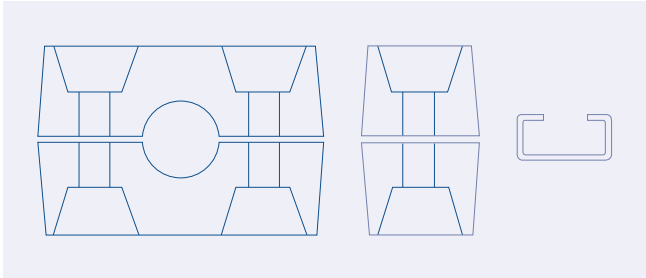
- **Heavy Duty** series for thick wall hydraulic pipe and working pressures above 200 bar (2900 PSI) (from 6 mm to 216 mm external diameter

hydraulic pipes and from 1/8" to 16" nominal internal diameter pipes). Heavy-duty metal components such as upper plates, locking plates, rails, etc. are treated in a cathaphoresis process in order to withstand 750 h salt spray ASTM tests.

- **Twin series** for twin lines of standard hydraulic pipe and working pressures up to 200 bar (2900 PSI) (from 6 mm to 42,4 mm external diameter hydraulic pipes and from 1/4" to 1-1/2" nominal internal diameter pipes)

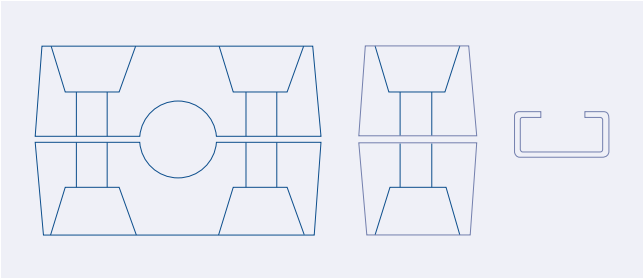
Balflex assumes no liability for typographical errors or other errors.

For any precise technical information you must always contact our technical department. Dimensions and Data shown may be changed without notice.



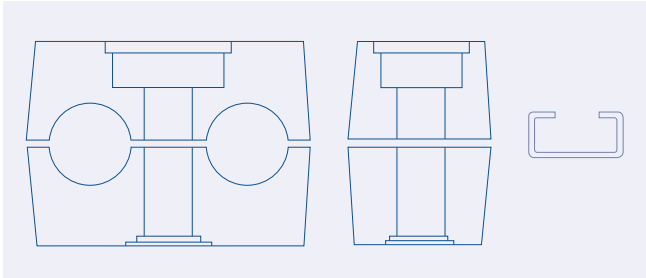
Light Duty Hydraulic Pipe Clamps
84.100A

pag. 79



Heavy Duty Hydraulic Pipe Clamps
84.200A

pag. 80



Twin Line Hydraulic Pipe Clamps
84.300A

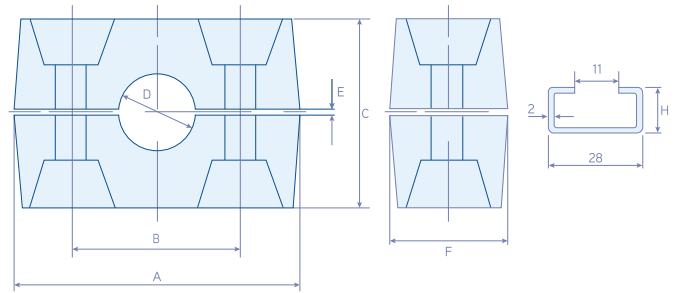
pag. 82



Light Duty Hydraulic Pipe Clamps

84.100A.

According to DIN 3015



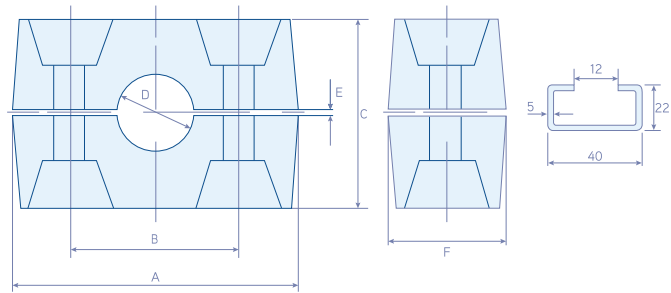
#	Pipe External Ø	dimensions (mm)						
	D mm	A	B	C	E	Screw	Lower Plate (LxWxTH)	Upper Plate (LxWxTH)
84.100A.0060P	6	37	20	27	0,4	M6	36 x 30 x 3	34 x 30 x 3
84.100A.0080P	8	37	20	27	0,4	M6	36 x 30 x 3	34 x 30 x 3
84.100A.0100P	10	37	20	27	0,4	M6	36 x 30 x 3	34 x 30 x 3
84.100A.0120P	12	37	20	27	0,4	M6	36 x 30 x 3	34 x 30 x 3
84.100A.0127P	12,7	43	26	33	0,6	M6	42 x 30 x 3	40 x 30 x 3
84.100A.0135P	13,5	43	26	33	0,6	M6	42 x 30 x 3	40 x 30 x 3
84.100A.0140P	14	43	26	33	0,6	M6	42 x 30 x 3	40 x 30 x 3
84.100A.0150P	15	43	26	33	0,6	M6	42 x 30 x 3	40 x 30 x 3
84.100A.0160P	16	43	26	33	0,6	M6	42 x 30 x 3	40 x 30 x 3
84.100A.0172P	17,2	43	26	33	0,6	M6	42 x 30 x 3	40 x 30 x 3
84.100A.0180P	18	43	26	33	0,6	M6	42 x 30 x 3	40 x 30 x 3
84.100A.0190P	19	50	33	35	0,6	M6	50 x 30 x 3	48 x 30 x 3
84.100A.0200P	20	50	33	35	0,6	M6	50 x 30 x 3	48 x 30 x 3
84.100A.0213P	21,3	50	33	35	0,6	M6	50 x 30 x 3	48 x 30 x 3
84.100A.0220P	22	50	33	35	0,6	M6	50 x 30 x 3	48 x 30 x 3
84.100A.0250P	25	50	33	35	0,6	M6	50 x 30 x 3	48 x 30 x 3
84.100A.0269P	26,9	59	40	42	0,6	M6	60 x 30 x 3	57 x 30 x 3
84.100A.0280P	28	59	40	42	0,6	M6	60 x 30 x 3	57 x 30 x 3
84.100A.0300P	30	59	40	42	0,6	M6	60 x 30 x 3	57 x 30 x 3
84.100A.0320P	32	71	52	58	0,8	M6	72 x 30 x 3	70 x 30 x 3
84.100A.0337P	33,7	71	52	58	0,8	M6	72 x 30 x 3	70 x 30 x 3
84.100A.0350P	35	71	52	58	0,8	M6	72 x 30 x 3	70 x 30 x 3
84.100A.0380P	38	71	52	58	0,8	M6	72 x 30 x 3	70 x 30 x 3
84.100A.0400P	40	71	52	58	0,8	M6	72 x 30 x 3	70 x 30 x 3
84.100A.0420P	42	71	52	58	0,8	M6	72 x 30 x 3	70 x 30 x 3
84.100A.0483P	48,3	86	66	66	0,8	M6	88 x 30 x 3	86 x 30 x 3
84.100A.0508P	50,8	86	66	66	0,8	M6	88 x 30 x 3	86 x 30 x 3

Balflex assumes no liability for typographical errors or other errors.
For any precise technical information you must always contact our technical department. Dimensions and Data shown may be changed without notice.

Heavy Duty Hydraulic Pipe Clamps

84.200A.

According to DIN 3015



#	Pipe External Ø	dimensions (mm)							
	D mm	A	B	C	E	F	Screw	Lower Plate (LxWxTH)	Upper Plate (LxWxTH)
84.200A.0060P	6	56	33	33	1,0	30	M10	74 x 30 x 8	74 x 30 x 8
84.200A.0080P	8	56	33	33	1,0	30	M10	74 x 30 x 8	74 x 30 x 8
84.200A.0100P	10	56	33	33	1,0	30	M10	74 x 30 x 8	74 x 30 x 8
84.200A.0120P	12	56	33	33	1,0	30	M10	74 x 30 x 8	74 x 30 x 8
84.200A.0135P	13,5	56	33	33	1,0	30	M10	74 x 30 x 8	74 x 30 x 8
84.200A.0140P	14	56	33	33	1,0	30	M10	74 x 30 x 8	74 x 30 x 8
84.200A.0150P	15	56	33	33	1,0	30	M10	74 x 30 x 8	74 x 30 x 8
84.200A.0160P	16	56	33	33	1,0	30	M10	74 x 30 x 8	74 x 30 x 8
84.200A.0167P	16,7	56	33	33	1,0	30	M10	74 x 30 x 8	74 x 30 x 8
84.200A.0172P	17,2	56	33	33	1,0	30	M10	74 x 30 x 8	74 x 30 x 8
84.200A.0180P	18	56	33	33	1,0	30	M10	74 x 30 x 8	74 x 30 x 8
84.200A.0200P	20	71	45	48	1,0	30	M10	86 x 30 x 8	86 x 30 x 8
84.200A.0213P	21,3	71	45	48	1,0	30	M10	86 x 30 x 8	86 x 30 x 8
84.200A.0220P	22	71	45	48	1,0	30	M10	86 x 30 x 8	86 x 30 x 8
84.200A.0250P	25	71	45	48	1,0	30	M10	86 x 30 x 8	86 x 30 x 8
84.200A.0269P	26,9	71	45	48	1,0	30	M10	86 x 30 x 8	86 x 30 x 8
84.200A.0280P	28	71	45	48	1,0	30	M10	86 x 30 x 8	86 x 30 x 8
84.200A.0300P	30	71	45	48	1,0	30	M10	86 x 30 x 8	86 x 30 x 8
84.200A.0301P	30	85	60	61	1,0	30	M10	100 x 30 x 8	100 x 30 x 8
84.200A.0320P	32	85	60	61	1,0	30	M10	100 x 30 x 8	100 x 30 x 8
84.200A.0337P	33,7	85	60	61	1,0	30	M10	100 x 30 x 8	100 x 30 x 8
84.200A.0350P	35	85	60	61	1,0	30	M10	100 x 30 x 8	100 x 30 x 8
84.200A.0380P	38	85	60	61	1,0	30	M10	100 x 30 x 8	100 x 30 x 8
84.200A.0381P	38	116	90	90	2,0	45	M12	140 x 45 x 8	140 x 45 x 10
84.200A.0400P	40	85	60	61	1,0	30	M10	100 x 30 x 8	100 x 30 x 8
84.200A.0420P	42	116	90	90	2,0	45	M12	140 x 45 x 8	140 x 45 x 10
84.200A.0483P	48,3	116	90	90	2,0	45	M12	140 x 45 x 8	140 x 45 x 10
84.200A.0500P	50	116	90	90	2,0	45	M12	140 x 45 x 8	140 x 45 x 10
84.200A.0550P	55	116	90	122	2,0	45	M12	140 x 45 x 8	140 x 45 x 10
84.200A.0603P	60,3	116	90	122	2,0	45	M12	140 x 45 x 8	140 x 45 x 10
84.200A.0635P	63,5	116	90	122	2,0	45	M12	140 x 45 x 8	140 x 45 x 10
84.200A.0650P	65	116	90	122	2,0	45	M12	140 x 45 x 8	140 x 45 x 10
84.200A.0700P	70	116	90	122	2,0	45	M12	140 x 45 x 8	140 x 45 x 10



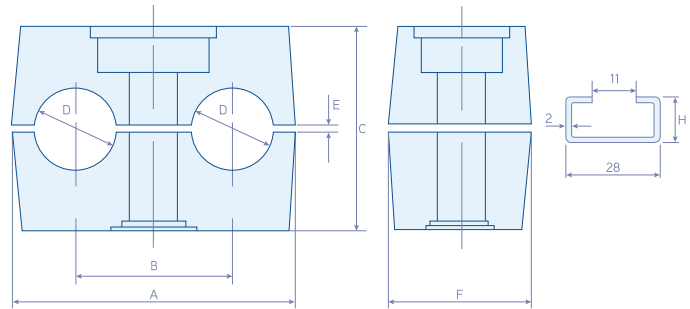
#	Pipe External Ø	dimensions (mm)							
	D mm	A	B	C	E	F	Screw	Lower Plate (LxWxTH)	Upper Plate (LxWxTH)
84.200A.0650P	65	155	122	122	2,5	60	M16	180 x 60 x 11	180 x 60 x 10
84.200A.0700P	70	155	122	122	2,5	60	M16	180 x 60 x 11	180 x 60 x 10
84.200A.0730P	73	155	122	122	2,5	60	M16	180 x 60 x 11	180 x 60 x 10
84.200A.0761P	76,1	155	122	122	2,5	60	M16	180 x 60 x 11	180 x 60 x 10
84.200A.0800P	80	155	122	122	2,5	60	M16	180 x 60 x 11	180 x 60 x 10
84.200A.0825P	82,5	155	122	122	2,5	60	M16	180 x 60 x 11	180 x 60 x 10
84.200A.0889P	88,9	155	122	122	2,5	60	M16	180 x 60 x 11	180 x 60 x 10
84.200A.0890P	88,9	209	168	172	2,5	80	M20	226 x 80 x 17	226 x 80 x 15
84.200A.1000P	100	209	168	172	2,5	80	M20	226 x 80 x 17	226 x 80 x 15
84.200A.1016P	101,6	209	168	172	2,5	80	M20	226 x 80 x 17	226 x 80 x 15
84.200A.1080P	108	209	168	172	2,5	80	M20	226 x 80 x 17	226 x 80 x 15
84.200A.1143P	114,3	209	168	172	2,5	80	M20	226 x 80 x 17	226 x 80 x 15
84.200A.1270P	127	209	168	172	2,5	80	M20	226 x 80 x 17	226 x 80 x 15
84.200A.1330P	133	209	168	172	2,5	80	M20	226 x 80 x 17	226 x 80 x 15
84.200A.1397P	139,7	252	205	202	3,5	90	M24	270 x 90 x 20	270 x 90 x 15
84.200A.1524P	152,4	252	205	202	3,5	90	M24	270 x 90 x 20	270 x 90 x 15
84.200A.1590P	159	252	205	202	3,5	90	M24	270 x 90 x 20	270 x 90 x 15
84.200A.1650P	165	252	205	202	3,5	90	M24	270 x 90 x 20	270 x 90 x 15
84.200A.1778P	177,8	252	205	202	3,5	90	M24	270 x 90 x 20	270 x 90 x 15
84.200A.2160P	216	338	265	271	3,5	120	M30	340 x 120 x 20	340 x 120 x 25
84.200A.2194P	219,4	338	265	271	3,5	120	M30	340 x 120 x 20	340 x 120 x 25
84.200A.2445P	244,5	476	395	410	10	160	M30	520 x 160 x 22	520 x 160 x 30
84.200A.2730P	273	476	395	410	10	160	M30	520 x 160 x 22	520 x 160 x 30
84.200A.3239P	323,9	476	395	410	10	160	M30	520 x 160 x 22	520 x 160 x 30
84.200A.3556P	355,6	640	535	542	30	180	M30	680 x 180 x 22	680 x 180 x 30
84.200A.4064P	406,4	640	535	542	30	180	M30	680 x 180 x 22	680 x 180 x 30

Balflex assumes no liability for typographical errors or other errors.
For any precise technical information you must always contact our technical department. Dimensions and Data shown may be changed without notice.

Twin Line Hydraulic Pipe Clamps

84.300.

According to DIN 3015



#	Pipe External Ø	dimensions (mm)					Screw	Lower Plate (LxWxTH)
	D mm	A	B	C	E	F		
84.300A.0060P	6	36	20	27	0,5	30	M8	37 x 30 x 3
84.300A.0064P	6,4	36	20	27	0,5	30	M8	37 x 30 x 3
84.300A.0080P	8	36	20	27	0,5	30	M8	37 x 30 x 3
84.300A.0095P	9,5	36	20	27	0,5	30	M8	37 x 30 x 3
84.300A.0100P	10	36	20	27	0,5	30	M8	37 x 30 x 3
84.300A.0120P	12	36	20	27	0,5	30	M8	37 x 30 x 3
84.300A.0127P	12,7	53	29	29	0,8	30	M8	55 x 30 x 5
84.300A.0135P	13,5	53	29	29	0,8	30	M8	55 x 30 x 5
84.300A.0140P	14	53	29	29	0,8	30	M8	55 x 30 x 5
84.300A.0150P	15	53	29	29	0,8	30	M8	55 x 30 x 5
84.300A.0160P	16	53	29	29	0,8	30	M8	55 x 30 x 5
84.300A.0172P	17,2	53	29	29	0,8	30	M8	55 x 30 x 5
84.300A.0180P	18	53	29	29	0,8	30	M8	55 x 30 x 5
84.300A.0190P	19	67	36	37	1,0	30	M8	70 x 30 x 5
84.300A.0200P	20	67	36	37	1,0	30	M8	70 x 30 x 5
84.300A.0213P	21,3	67	36	37	1,0	30	M8	70 x 30 x 5
84.300A.0220P	22	67	36	37	1,0	30	M8	70 x 30 x 5
84.300A.0230P	23	67	36	37	1,0	30	M8	70 x 30 x 5
84.300A.0250P	25	67	36	37	1,0	30	M8	70 x 30 x 5
84.300A.0254P	25,4	67	36	37	1,0	30	M8	70 x 30 x 5
84.300A.0269P	26,9	82	45	42	1,0	30	M8	85 x 30 x 5
84.300A.0280P	28	82	45	42	1,0	30	M8	85 x 30 x 5
84.300A.0300P	30	82	45	42	1,0	30	M8	85 x 30 x 5
84.300A.0320P	32	106	56	54	1,0	30	M8	110 x 30 x 5
84.300A.0337P	33,7	106	56	54	1,0	30	M8	110 x 30 x 5
84.300A.0350P	35	106	56	54	1,0	30	M8	110 x 30 x 5
84.300A.0380P	38	106	56	54	1,0	30	M8	110 x 30 x 5
84.300A.0400P	40	106	56	54	1,0	30	M8	110 x 30 x 5
84.300A.0424P	42,4	106	56	54	1,0	30	M8	110 x 30 x 5